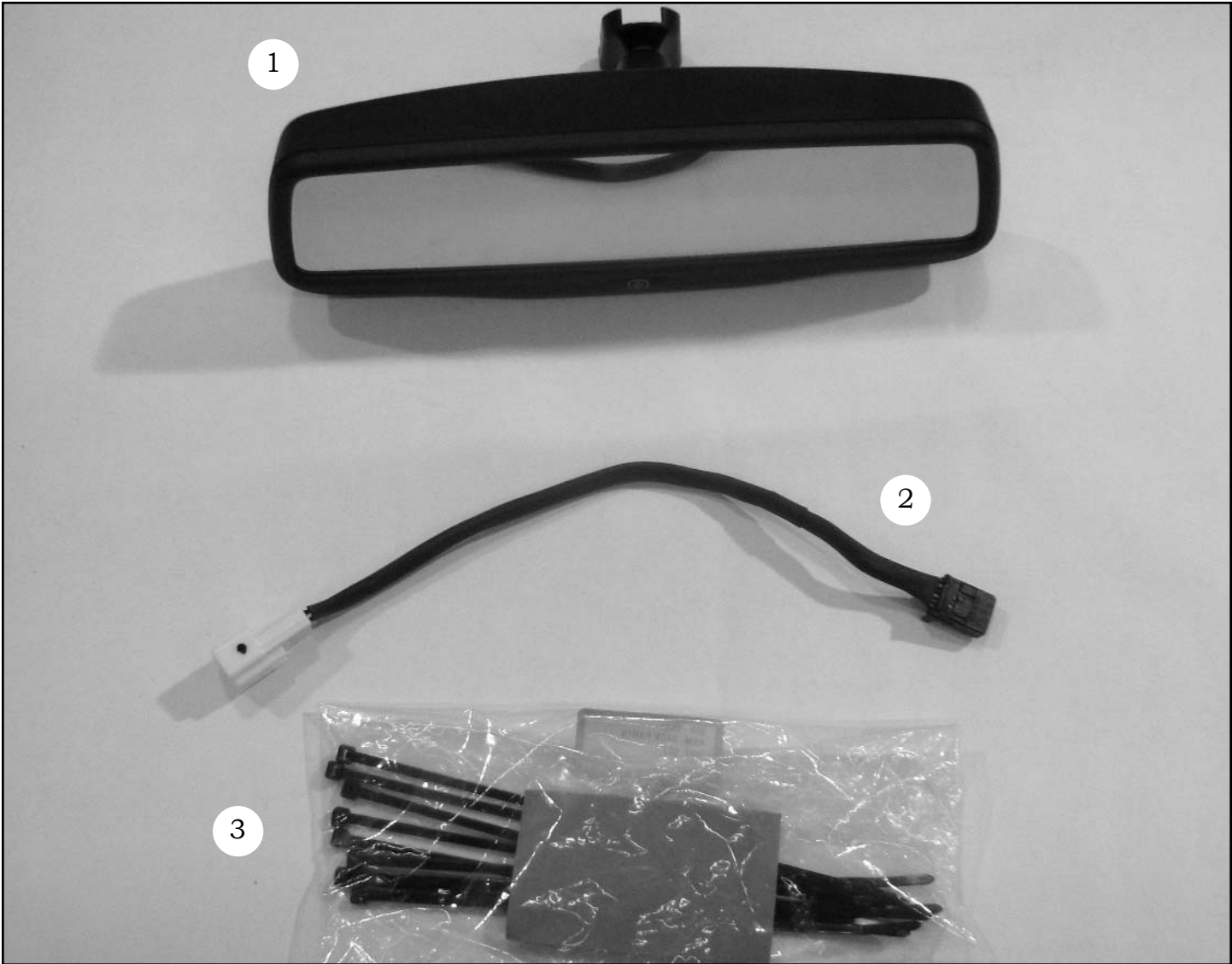


PARTS IDENTIFICATION

ITEM	QUANTITY	PART NUMBER	DESCRIPTION
1	1	N/A	3.5 MIRROR/MONITOR ASSEMBLY
2	1	N/A	TACOMA INTERFACE HARNESS
3	1	N/A	SACK PARTS: TIE STRAPS, FOAM TAPE



***BEFORE** BEGINNING INSTALLATION, **FAMILIARIZE** YOURSELF WITH THE INSTALLATION INSTRUCTIONS AND THE **REARSIGHT™** BACK-UP CAMERA SYSTEM COMPONENTS.

INSTALLATION

STOP **CAUTION: It is advisable to disconnect the negative battery cable for 3 minutes before beginning installation, to avoid unintended air bag deployment. Note and record any anti-theft radio codes prior to disconnecting.**

VEHICLE PREPARATION



1. REMOVE THE FACTORY REAR VIEW MIRROR BY LOOSENING THE TORX-20 SCREW AND SLIDING IT OFF OF THE WINDSHIELD MOUNT. **FIGURE 1**



2. REMOVE THE OVERHEAD CONSOLE BY REMOVING FOUR (4) TORX-20 SCREWS BEHIND THE SUNGLASSES AND BUSINESS CARD HOLDERS. *NOTE: THE CONSOLE FOR A TRUCK WITH A SUNROOF IS SHOWN. OTHER TRIM LEVELS AND CAB CONFIGURATIONS MAY HAVE A LONGER OVERHEAD CONSOLE.* **FIGURE 2**

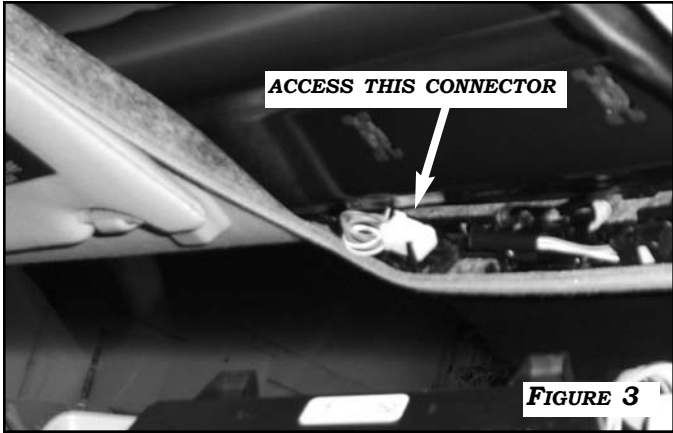


3. DISLodge THE WHITE 12-PIN VEHICLE CONNECTOR FROM THE HOLDING CLIPS SHOWN IN **FIGURE 3**.

ROUTING HARNESS AND POWER CONNECTIONS



1. CONNECT THE TUNDRA INTERFACE HARNESS TO THE VEHICLE BY SNAPPING THE TWO 12-PIN CONNECTORS TOGETHER. MAKE SURE THE LOCK IS ENGAGED. **FIGURE 4**



2. CONNECT THE TUNDRA INTERFACE HARNESS TO THE MIRROR MONITOR BY INSERTING THE 18-PIN CONNECTOR INTO THE MATING CONNECTOR ON THE BACK SIDE OF THE MIRROR MONITOR. MAKE SURE THE LOCK IS ENGAGED. **FIGURE 5**

INSTALLING REARSIGHT MIRROR



1. INSTALL THE REARSIGHT MIRROR TO THE WINDSHIELD. SECURE IT BY TIGHTENING THE TORX-20 SCREW. **FIGURE 6**



2. USE THE SUPPLIED FOAM TAPE TO WRAP THE MIRROR HARNESS. BUNDLE THE EXCESS CABLE AND SECURE IT BEHIND THE HEADLINER WITH WIRE TIES.

TESTING AND REASSEMBLY

TESTING



1. RECONNECT NEGATIVE BATTERY CABLE AND TORQUE TO **3FT*LBS**. RE-ENTER ANY THEFT DETERRENT INFORMATION, IF APPLICABLE.



2. TURN THE IGNITION SWITCH **ON**. PUT THE VEHICLE IN REVERSE. VERIFY THAT THE REARSIGHT MONITOR IS ON AND THAT THE CAMERA'S PICTURE APPEARS.
3. IF THERE IS NO PICTURE, VERIFY ALL CONNECTIONS ARE SECURE.

REASSEMBLY



1. REINSTALL ALL TRIM PIECES TAKING SPECIAL CARE TO ENSURE HARNESSES AND WIRING CONNECTIONS ARE PROPERLY SECURED.
2. BE SURE HARNESS IS NOT PINCHED OR BOUND BY TRIM PIECES.
3. PLACE THE OWNER'S CARD IN THE GLOVE BOX.
4. RECONNECT ALL DISCONNECTED BULBS AND CHECK FOR FUNCTION.

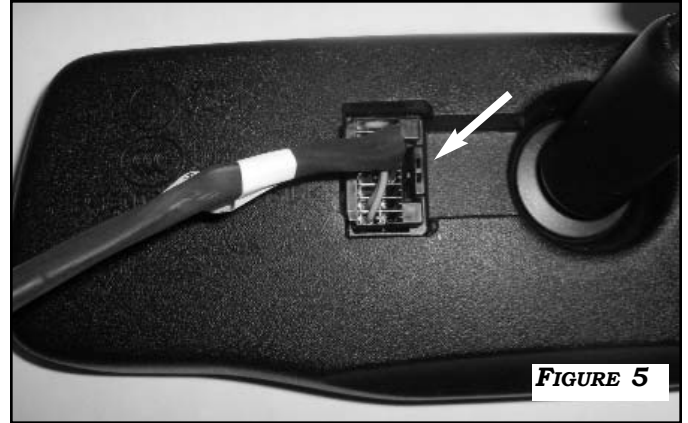


FIGURE 5



FIGURE 6

NOTES