

CAMERA SYSTEM

250-8010

INSTALLATION INSTRUCTIONS

CONTENTS

PARTS IDENTIFICATION	2
SYSTEM LAYOUT	3
INSTALLATION	4
TESTING.	10
REASSEMBLY	10
INSTALLATION TIPS.	10
NOTES.	11

PARTS IDENTIFICATION

ITEM	QUANTITY	PART NUMBER	DESCRIPTION
1	1	250-8202	REARSIGHT MONITOR
2	1		MONITOR EXTENSION HARNESS
3	1	FORM # 4928	INSTALLATION MANUAL
4	1		MONITOR STAND
5	1	250-8110	REAR CAMERA ASSEMBLY
6	1	250-8530	CAMERA RCA & POWER HARNESS
7	1	250-8511	CAMERA A/V EXTENSION HARNESS
8	1	250-8509	SACK PARTS: TIE STRAPS, T-TAPS, SEALING PUTTY, FOAM TAPE, ALCOHOL PADS, CAMERA HARDWARE

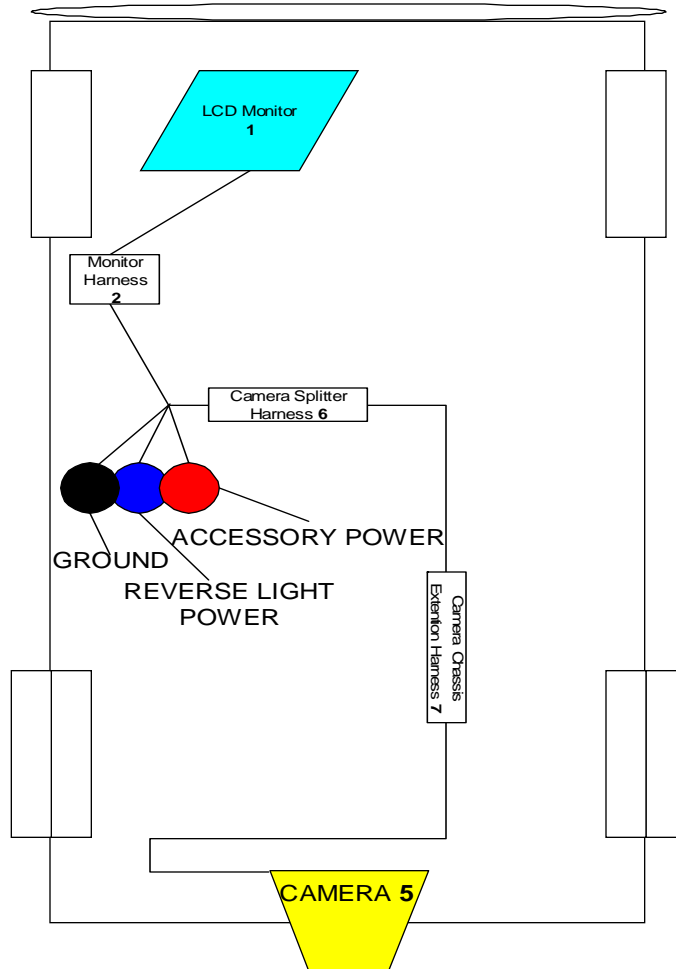


HARDWARE BAG CONTENTS

ITEM	QTY	DESCRIPTION	ITEM	QTY	DESCRIPTION
8a	20	WIRE TIES	8d	1	SEALING PUTTY
8b	1	CAMERA MTG HARDWARE	8e	1	Warranty tag, not pictured)
8c	5	T-TAP's, IDC Connector			

SYSTEM LAYOUT

DIAGRAM A



VEHICLE PREPARATION

Before beginning installation, familiarize yourself with the installation instructions and the REAR SIGHT camera system components.

To ensure your safety:

- A) Apply the emergency brake.
- B) Read this manual before starting.

CAUTION: It is advisable to disconnect the negative battery cable for 3 minutes before beginning installation, to avoid unintended air bag deployment. Note and record any anti-theft radio codes prior to disconnecting.

INSTALLATION

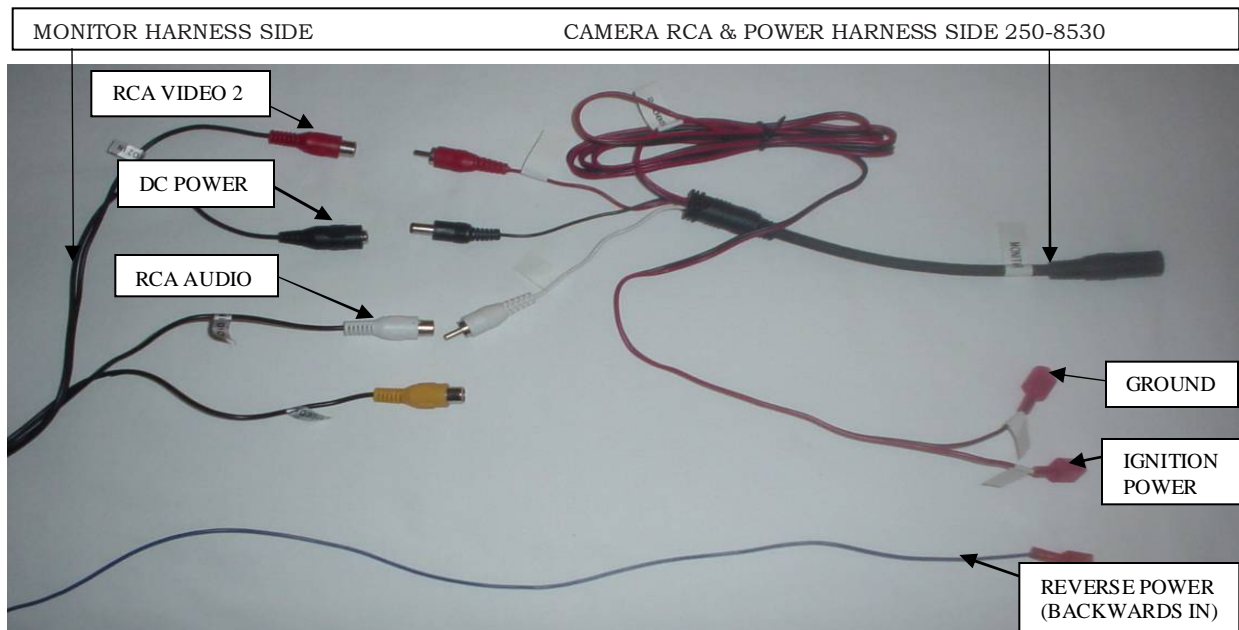
STEP 1: HARNESS CONNECTIONS

1. ROUTE HARNESSES TO BE JOINED WITH VIDEO 2 (VIDEO 2 ALLOWS REVERSE OVERRIDE TO FUNCTION) RCA, AUDIO RCA & DC POWER CONNECTOR HARNESS AS PER FIGURE 1. USE PROVIDED WIRE TIES TO SECURE WIRING HARNESS AWAY FROM MOVING PARTS AND SHARP EDGES.

CONNECTIONS

- RCA VIDEO 2 HARNESS TO RCA CAMERA HARNESS 250-8530
- DC POWER VIDEO HARNESS TO DC POWER CAMERA HARNESS 250-8530
- RCA AUDIO VIDEO HARNESS TO RCA AUDIO CAMERA HARNESS 250-8530
- VIDEO 1 RCA HARNESS NOT USED IN THIS KIT. (NOTE THIS INPUT CAN BE USED FOR SECOND CAMERA, NAVIGATION...ANY RCA DISPLAY)
- BLACK GROUND WIRE (LOCATED ON 250-8530 CAMERA RCA & POWER HARNESS) – TO CHASSIS GROUND
- RED IGNITION WIRE (LOCATED ON 250-8530 CAMERA RCA & POWER HARNESS) – TO IGNITION POWER SOURCE.
- BACKWARDS IN (LOCATED ON MONITOR RCA & POWER HARNESS) – TO REVERSE LIGHT POWER.

FIGURE 1

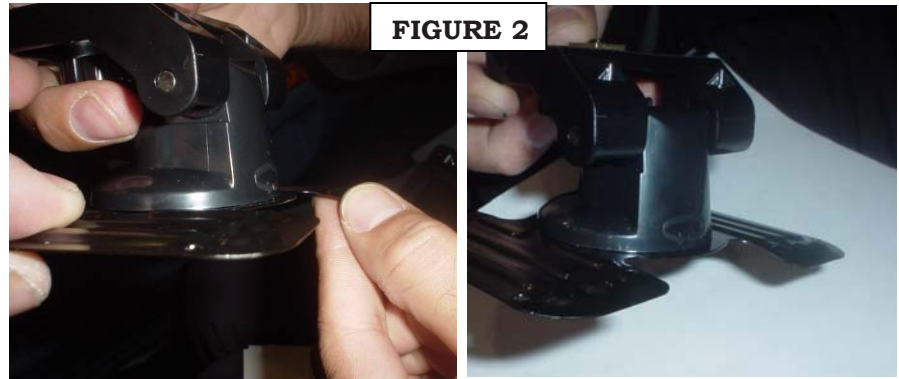


INSTALLATION

STEP 2: MOUNTING MONITOR



1. BEGIN MONITOR INSTALLATION BY FORMING MONITOR BASE TABS TO FIT THE CONTOUR OF THE DASH WHERE MONITOR IS TO BE PLACED. BY FAILING TO PROPERLY FORM THE BASE TABS, THE BASE WILL NOT ADHERE SECURELY TO THE DASH ALLOWING FOR PREMATURE FAILURE.



2. ONCE DRY FITMENT TO THE DASH IS COMPLETE ATTACH THE MONITOR TO THE BASE TO VERIFY PLACEMENT AND SECURITY OF FASTENERS ASSOCIATED WITH FIXING MONITOR POSITION ON THE BASE. YOU MUST SECURE MONITOR IN POSITION DESIRED. THIS WILL INSURE THAT MONITOR STAYS IN POSITION DESIRED ONCE INSTALLATION IS COMPLETE. WARNING: CENTER BOTTOM BOLT IS NOT ADJUSTABLE AFTER MOUNTING/STICKING BASE TO DASH WITH ADHESIVE STRIP!

3. USE THE ALCOHOL PAD PROVIDED TO CLEAN THE DASH AREA AND BASE OF PEDESTAL SELECTED FOR INSTALLATION. (IN THE EVENT THE DASH HAS BEEN WIPED WITH A SILICON PRODUCT AN ACTIVATOR MAY BE REQUIRED TO REMOVE THE EFFECTS OF THE SILICON MATERIAL.)

4. ONCE THE BASE HAS BEEN CLEANED AND DRIED REMOVE ADHESIVE COVER FROM ONE SIDE OF MONITOR BASE ADHESIVE MOUNTING FOAM AND APPLY IT TO THE MONITOR BASE. WARNING: THIE FOAM ADHESIVE IS A ONE TIME STICK PRODUCT. IF YOU PLACE IMPROPERLY YOU WILL HAVE TO REPLACE THE FOAM AND THERE IS ONLY ONE STRIP WITH THE KIT. WITH THE FOAM ADHESIVE STRIP AND THE DASH CLEANED AND DRIED, REMOVE THE ADHESIVE COVER FROM THE MONITOR BASE. PLACE THE MONITOR IN POSITION AND PRESS FIRMLY IN PLACE FOR 20-30 SECONDS TO INSURE SOLID ADHESION. (FIGURE3)



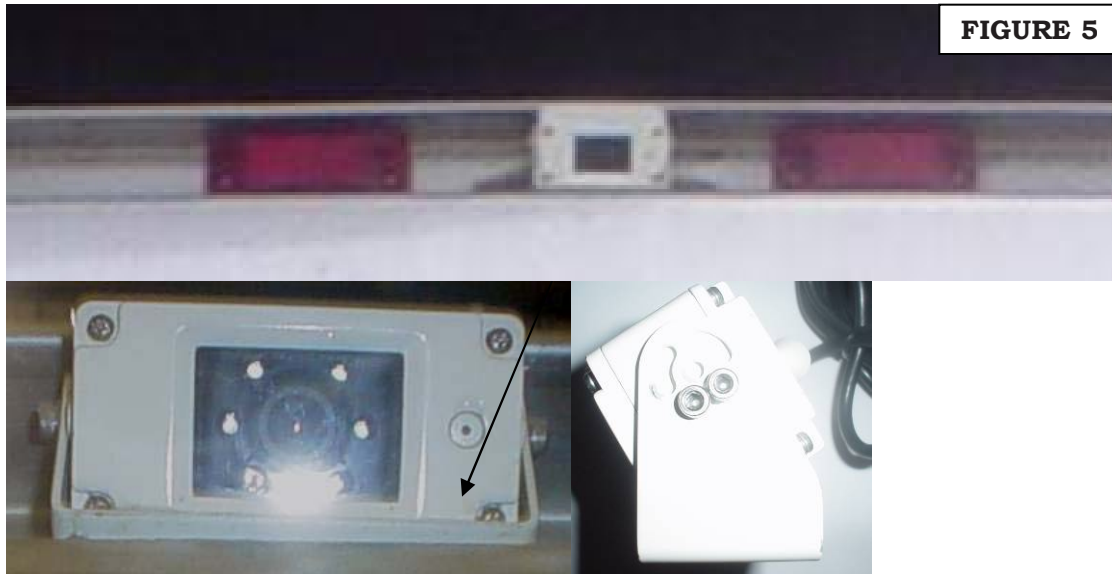
INSTALLATION

STEP 3: MOUNTING CAMERA

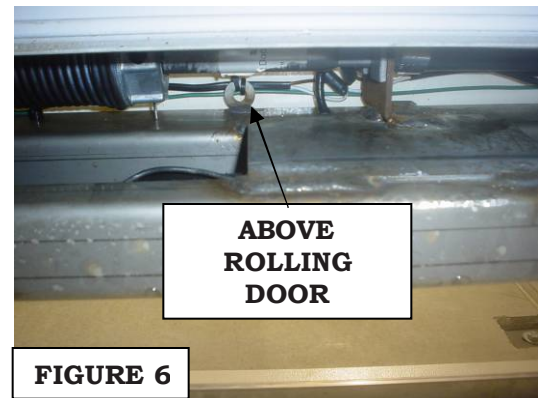


1. WHEN MOUNTING THE CAMERA CHOOSE A LOCATION THAT MEETS SOME VERY IMPORTANT REQUIREMENTS.
 - CAMERA IS MOUNTED IN MANNER THAT PROVIDES A CLEAR VIEW FOR THE BACK OF THE VEHICLE. THIS VIEW SHOULD INCLUDE A PORTION OF THE VEHICLE AS TO PROVIDE A POINT OF REFERENCE. THIS WILL LET YOU UNDERSTAND HOW FAR AWAY YOU ARE FROM AN OBJECT AND THE RATE OF CLOSER TO IT. ALSO CONSIDER BLINDSPOT AREAS.
 - THE CAMERA SHOULD BE IN AN AREA OF THE VEHICLE THAT PROTECTS IT FROM OBVIOUS DAMAGE DUE TO FREIGHT DELIVERY OR GENERAL VEHICLE USE. (FREE OF DOORS, DUMP BED TRAVEL...AWNINGS ON BUILDINGS...ETC)
 - WHENEVER POSSIBLE AVOID INSTALLING CAMERA IN LOW OR EXPOSED PLACES WHERE LENS CAN BE COVERED WITH ROAD DIRT, MUD AND EXHAUST GASES.

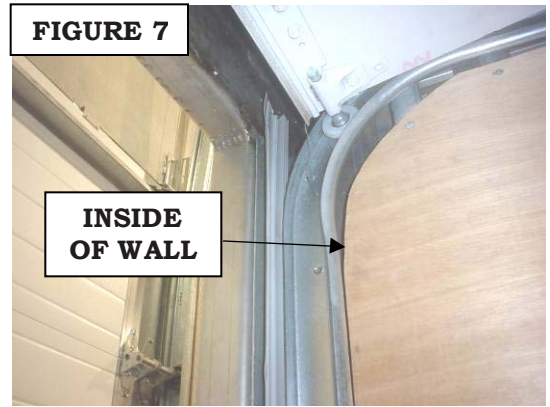
2. THIS INSTRUCTION IS BASED ON INSTALLATION PREFERENCE FOR THE BOX TRUCK APPLICATION (SEE CAMERA INSTALLATION FIGURE 5) REMOVE CENTER THIRD BRAKE LIGHT FROM BOX IF MOUNTING IN CENTER OF TOP OF BOX. (FIGURE5)
- REMOVE CENTER BRAKE LIGHT.
 - ENLARGE LED HARNESS HOLE FOR CAMERA HARNESS USING 12MM DRILL.
 - USE BRACKET FOR TEMPLATE TO MOUNT CAMERA AT OUTERMOST POINT OF FRAME.
 - ASSEMBLE CAMERA AS SHOWN. ANGLE CAMERA FULLY TO THE GROUND IN ORDER TO SEE BUMPER OF TRUCK.



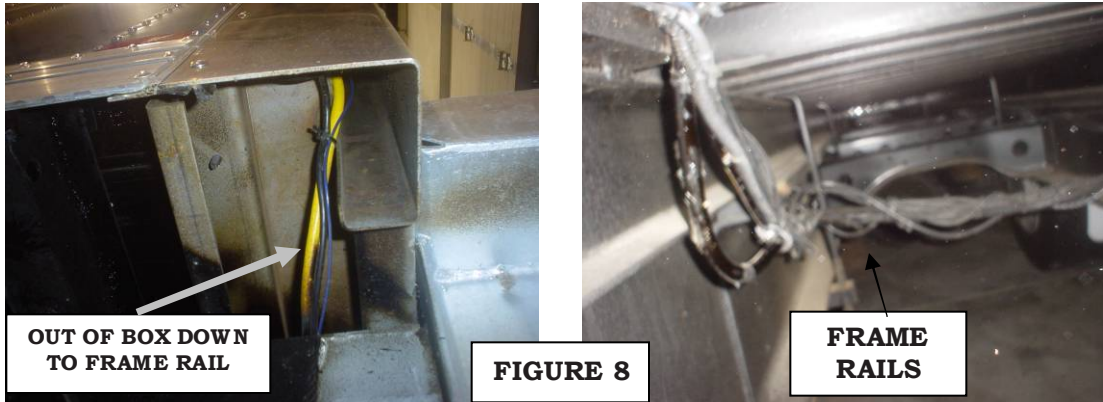
3. ALWAYS UTILIZE STANDARD PRACTICE OF VEHICLE WIRE ROUTING WHEN ROUTING CABLES. THIS INCLUDES ROUTING LOCATION, ATTACHMENT AND TIE POINTS.
- ROLLING DOOR SPRING WILL RUB THROUGH INSULATION AND DAMAGE CAMERA. ALWAYS ATTACH TO CLEARANCE LIGHTS MAIN TIE POINTS AND ALSO TO EXISTING HARNESS. (FIGURE6)



- ROUTE CABLES INSIDE WALL OF TRUCK BODY TO PREVENT ANY DAMAGE TO CIRCUITS. (FIGURE7)



- ROUTE WITH EXISTING CABLES AT EXITS AT THE BOTTOM OF THE BOX AND ALONG FRAME RAIL WIRE TIE CIRCUITS AT A MINIMUM AT THE OEM FREQUENCY. (FIGURE8)



4. OPTIONAL INSTALLATIONS

FIGURE 9



TESTING AND REASSEMBLY

TESTING

1. RECONNECT NEGATIVE BATTERY CABLE AND TORQUE TO **3 FT LBS**. RE-ENTER ANY THEFT DETERRENT INFORMATION, IF APPLICABLE.
2. TURN THE IGNITION SWITCH **ON**. PUT THE VEHICLE IN REVERSE. VERIFY THAT THE REARSIGHT MONITOR IS ON AND THAT THE CAMERA'S PICTURE APPEARS.
3. IF THERE IS NO PICTURE, VERIFY ALL CONNECTIONS ARE SECURE.

REASSEMBLY

1. REINSTALL ALL TRIM PIECES TAKING SPECIAL CARE TO ENSURE HARNESSES AND WIRING CONNECTIONS ARE PROPERLY SECURED.
2. BE SURE HARNESS IS NOT PINCHED OR BOUND BY TRIM PIECES.
3. PLACE THE OWNER'S CARD IN THE GLOVE BOX.
4. RECONNECT ALL DISCONNECTED BULBS AND CHECK FOR FUNCTION.

INSTALLATION TIPS

- **CONFIRM PROPER CABLE EXTENTION CONNECTOR ORIENTATION AND ALWAYS VERIFY PROPER ENDS ARE ROUTED IN PROPER DIRECTION.**
- **IT IS A GOOD IDEA TO DRY FIT THE KIT BEFORE PERMANENTLY ATTACHING THE UNIT TO INSURE PROPER ORIENTATION AND OPERATION BEFORE BEGINNING INSTALLATION FOR FAMILIARIZATION OF COMPONENTS.**
- **READ ALL INSTRUCTIONS AND WARNINGS BEFORE BEGINNING THE INSTALLATION OF THIS KIT.**
- **ALWAYS TREAT ANY METAL EXPOSED DURING INSTALLATION WITH RUST PREVENTATIVE COMPOUND TO PREVENT RUST AND OR CORROSION FAILURE.**
- **ALWAYS SEAL ANY HOLES DRILLED WITH PROVIDED SEALING PUTTY TO PREVENT WATER INFILTRATION INTO UNPROTECTED OR AREAS OF CONCERN.**
- **CONFIRM INTEGRITY OF MECHANICAL AND ELECTRICAL CONNECTIONS BEFORE MOVING TO NEXT INSTALLATION SEQUENCE.**

NOTES

NOTES