

Chevrolet Silverado - PARK ASSIST SYSTEM /CAMERA KIT
GM Sierra 2007-2012

Part Number: 250-8875



KIT CONTENTS

ITEM #	QTY	DESCRIPTION
1	1	PASM, HARN,PAS,CAM,RCA,DC
2	1	PASM,HARN,PAS,VIDEO,OUTPUT
3	1	PASM, HARN,PAS,MAIN,ACC+/-,OBD2
4	1	PASM,MOD,PAS,SILV
5	1	OBD II CONNECTOR



Chevrolet Silverado - PARK ASSIST SYSTEM /CAMERA KIT
GM Sierra 2007-2012

Part Number: 250-8875

BEFORE BEGINNING INSTALLATION

1. Read and understand the entire manual.
2. Validate PAS kit contents.
3. PAS must be installed with the prescribed camera in the prescribed location.
4. Camera System must be installed and functional before installing PAS In order to save time in trouble shooting.

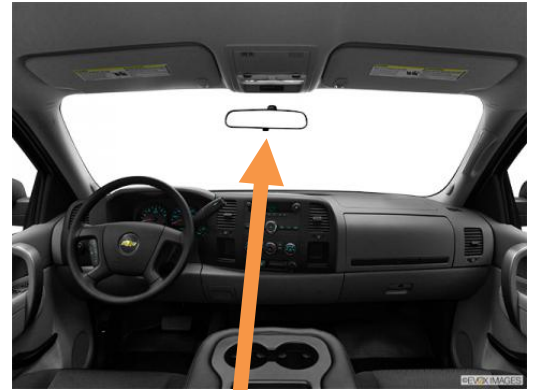


Rostra PAS part number 250-8875 has been designed to work directly with the 250-8569 LATCH CAMERA ASSEMBLY only! This product must be installed per this instruction for it to function as designed, tested and advertized.

Chevrolet Silverado - PARK ASSIST SYSTEM /CAMERA KIT GM Sierra 2007-2012

Part Number: 250-8875

INSTALLATION OVERVIEW



Attach the video input and DC output of the PAS module to the RCA & DC connector from the 250-8569.

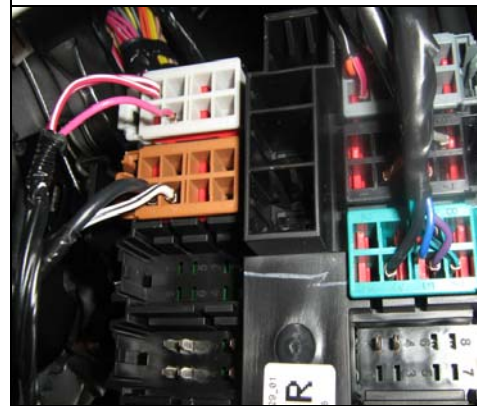
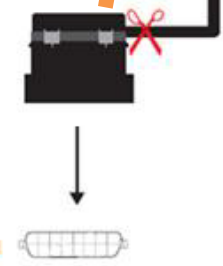
Attach the video output of the PAS to an onboard LCD monitor

Connect Data harness cap into OBD2 or

***Optional**

***Cut the Rostra connector off and solder wires: Red Wire to Pin 6, Black Wire to Pin 14.**

Locate the junction box under the driver-side lower dash area. Solder and connect RED wires from the main harnesses to the SOLID PINK wire in pin 6 as shown in picture below. Attach the black wires to chassis ground.



Chevrolet Silverado - PARK ASSIST SYSTEM /CAMERA KIT GM Sierra 2007-2012

Part Number: 250-8875

INSTALLATION INSTRUCTIONS

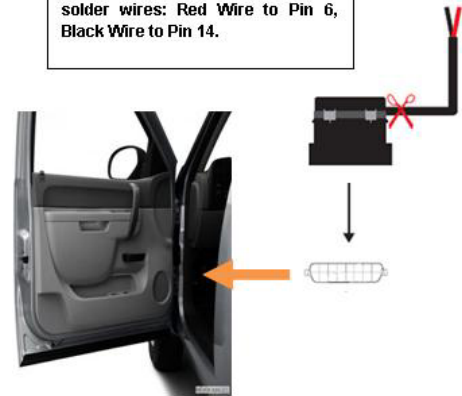
1. The Pas System uses the steering wheel position data from the OBD II connector. The OBD II connector cap fits onto the OBD II connector found under the dash on the drivers side of the vehicle. Plug the two pin connector from the provided OBD II CONNECTOR harness into the into the PASM, HARN,PAS,MAIN,ACC+/-,OBD2 for the kit.



Connect Data harness cap into OBD2 or

*Optional

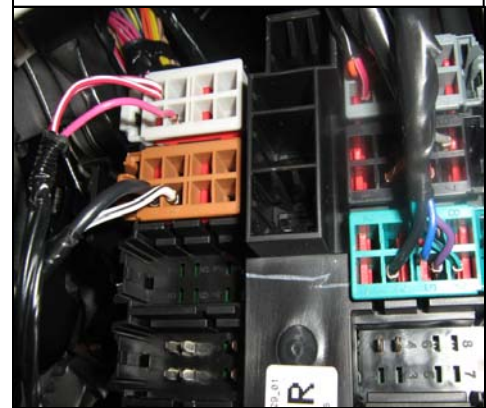
*Cut the Rostra connector off and solder wires: Red Wire to Pin 6, Black Wire to Pin 14.



2. Power and ground must be connected to the PASM, HARN, PAS, MAIN, ACC+/-,OBD2. You can find +12V keyed accessory in the location shown. Utilize a chassis ground for the black ground wire.



Locate the junction box under the driver-side lower dash area. Solder and connect RED wires from the main harnesses to the SOLID PINK wire in pin 6 as shown in picture below. Attach the black wires to chassis ground.



3. Video input for the PAS comes from the Video connectors from the 250-8569 Latch Camera assembly as shown. Connect the camera harness RCA & DC Plugs to the PASM, HARN,PAS,CAM,RCA,DC PAS harness.

4. Video output from the PAS is plugged into the monitor as shown. The DC plug if present on the monitor harness is not required and should be taped up into the harness.



Chevrolet Silverado - PARK ASSIST SYSTEM /CAMERA KIT

GM Sierra 2007-2012

Part Number: 250-8875

TROUBLESHOOTING AND CALIBRATION

1. Verify video is present.
 - a. If Yes - Go to step 2.
 - b. If No - Reinstall camera to display to ensure camera system is functional. Go to step 1c.
 - c. If still No –
 - i. Refer to Camera/Display installation instructions and verify all connections.
 - ii. Use a multimeter to validate voltage and ground on red and black wires.

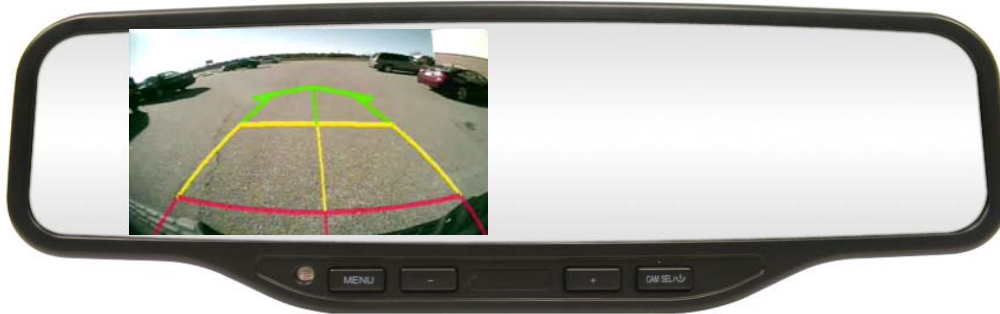
2. Verify parking lines appear on the display for the camera system.
 - a. If Yes - go to step 3.
 - b. If No -
 - i. Reinstall PAS system and retest.
 - ii. Verify OBDII Connector is attached. System will not work with out this connection.

3. Once the system is installed and is working, the system should be driven and verified to be operating properly.
 - a. Verify that the Camera is fitted properly and that the Red Line is parallel to the back of the vehicle.
 - b. Verify that the lines on the screen match the steering wheel orientation of the vehicle.
 - c. Verify that the outside lines of the graphic provide clearance for the vehicle. Note that clearance inside Red Zone Lines does not exist as it appears on the display and care must be taken.

**Chevrolet Silverado - PARK ASSIST SYSTEM /CAMERA KIT
GM Sierra 2007-2012**

Part Number: 250-8875

THE BENEFITS OF THE REARSIGHT PARK ASSIST SYSTEM (PAS)

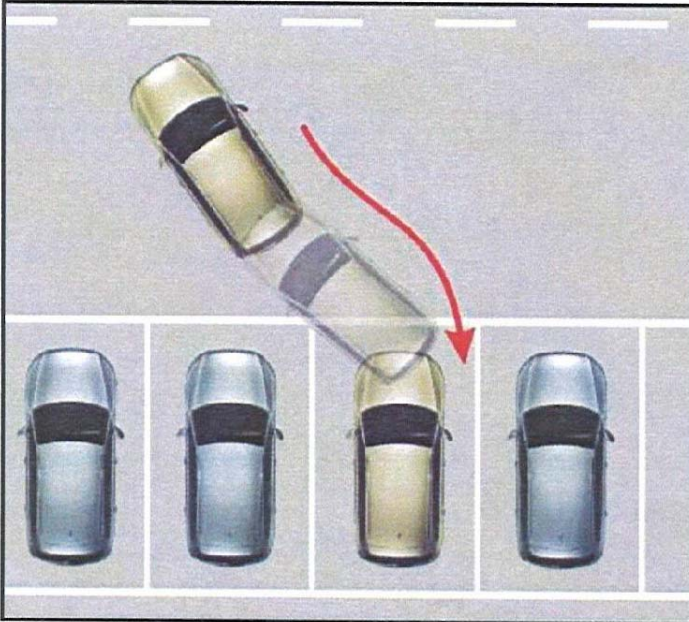


1. Driving Trajectory – The PAS uses the steering angle sensor from the vehicle to create a graph of the vehicle’s backing trajectory. The system takes the guess work out of where the vehicle will end up when Backing-Up.
2. Size Matters – Having enough room to park is always a question. Knowing the space is large enough and where the vehicle will end up reduces stress and anxiety over backing up whether backing into perpendicular or parallel parking places.
3. Blind spots do occur and so caution must always be used when driving in reverse. Note that the rear view and side view mirrors must be observed and also the front of the vehicle when using this product. This is not an auto-park product and is meant to only assist the driver in parking the vehicle.

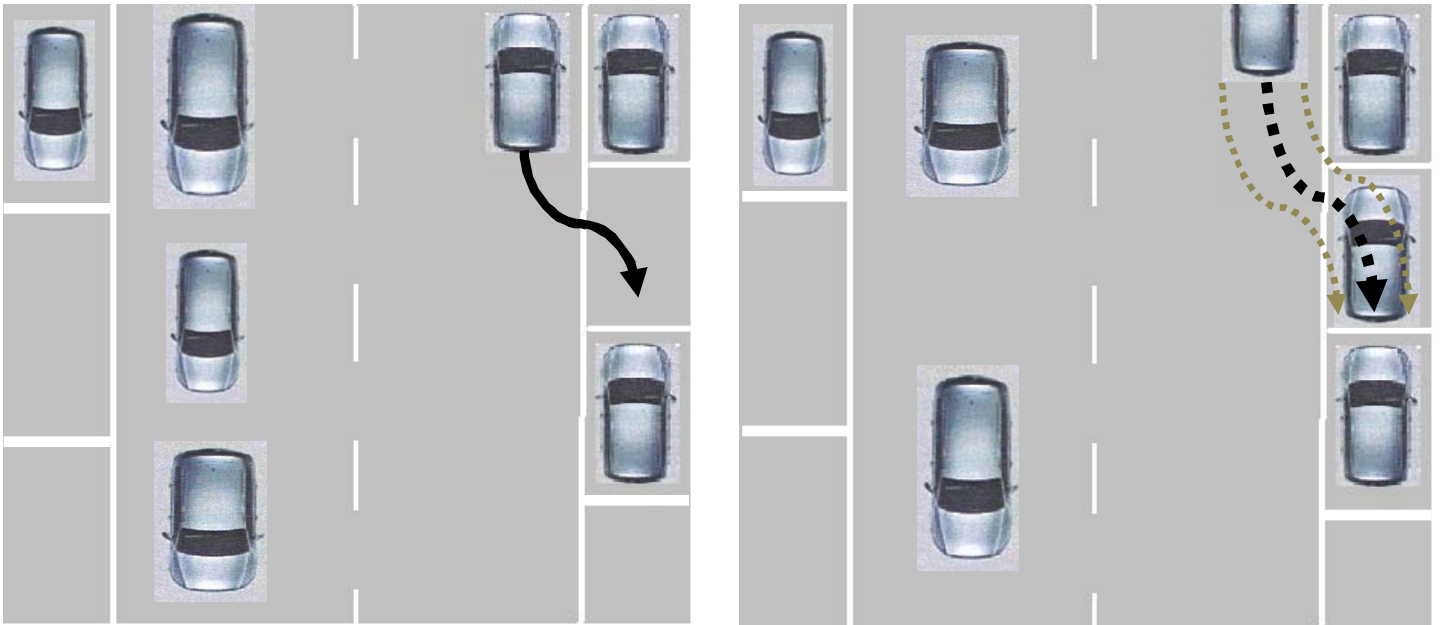
**Chevrolet Silverado - PARK ASSIST SYSTEM /CAMERA KIT
GM Sierra 2007-2012**

Part Number: 250-8875

REVERSE PARKING with the REARSIGHT Park Assist System (PAS)



PARALLEL PARKING WITH THE REAR SIGHT Park Assist System (PAS)



**Chevrolet Silverado - PARK ASSIST SYSTEM /CAMERA KIT
GM Sierra 2007-2012**

Part Number: 250-8875

SYSTEM USAGE AND WARNINGS

1. The back-up camera does not provide a comprehensive view of the entire rear of the vehicle. You should always look around the outside of your vehicle and use your mirrors to confirm your rear and side clearances. Always inspect behind, below and around you vehicle prior to backing up to avoid the possibility of personal injury or property damage.
2. Never back up while looking only at the camera display. The image on the screen is sometimes different than the actual conditions.
3. The system may react slower in cold weather.
4. Failure to operate this system in the manner described in this manual may result in personal injury, property damage or possible death.
5. Responsibility for safe vehicle operation remains with the driver.