

# REARSIGHT CAMERA SYSTEM

## 250-8569 Installation Instructions

Parts Identification	Page 1
Vehicle Preparation	Page 1
System Layout	Page 2
Installation	Page 2
Troubleshooting	Page 4

### Parts Identification

Item	Qty.	Part Number	Description
1	1	250-8569	Tailgate integrated CMOS color camera
2	1	250-8579	30' Extension Harness
3	1	250-8505	DC power connector
4	1	250-8584	S-video to RCA adapter harness
5	1	250-8598	Hardware service pack
6	1	N/A	36" convoluted tubing



**CAUTION:** It is advisable to disconnect the negative battery cable for 3 minutes before beginning installation, to avoid unintended air bag deployment. Note and record any anti-theft radio codes prior to disconnecting.

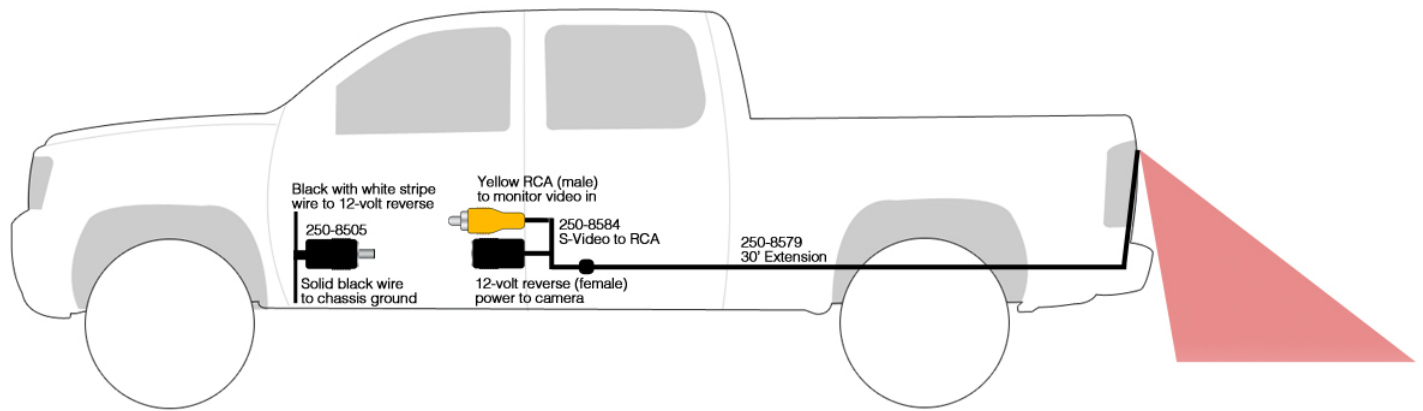
### Vehicle Preparation

Before beginning your installation, familiarize yourself with the installation instructions and the RearSight camera system components.

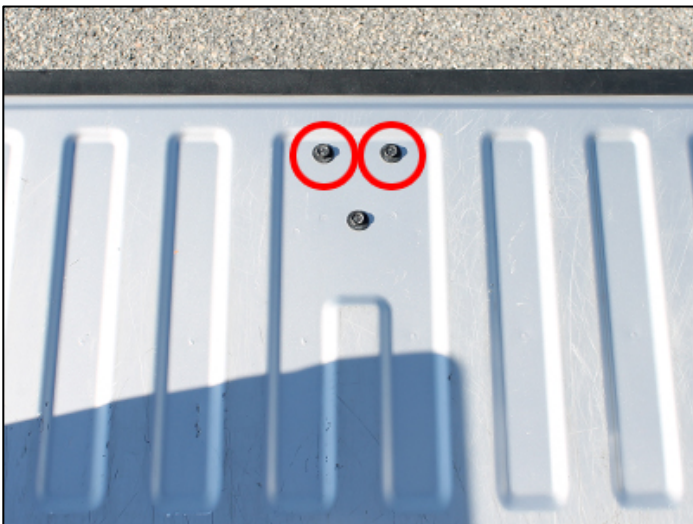
To ensure your safety, **(A)** apply the emergency brake and **(B)** read this entire manual before beginning.

**Form #5294, 1-21-2013**

## System Layout



## Installation



Begin by removing the two bolts securing the tailgate handle to the tailgate (circled above).



Carefully lift the factory tailgate handle away from the tailgate.



Connect the included 30' extension harness 250-8579 to the S-video extension harness from your camera.



Route harness 250-8579 to the opening at the bottom of the tailgate handle (passenger side of truck).



## Installation continued...

- Route harness 250-8579 under the body of the truck back to the driver side of the vehicle (**Tip:** lowering the truck's spare tire can provide extra room to work and gives easier access to fastening this harness to the vehicle's factory wiring harness).
- Route S-video harness 250-8579 along the driver side of the vehicle's body towards the passenger cabin using the supplied cable ties to attach to the vehicle's factory wiring harness along the way.



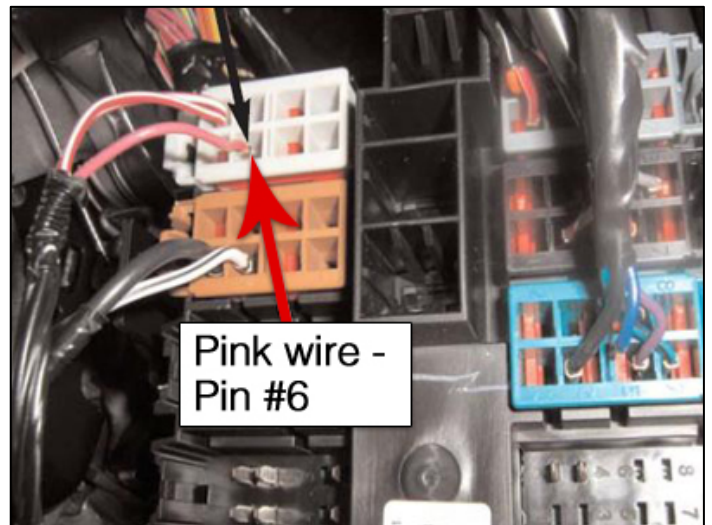
Remove the doorsill trim and gently lift back on the carpet near the driver's seat.



Route harness 250-8579 through the rubber grommet underneath the carpet.



Once through the grommet, connect harness 250-8579 to *S-video to RCA* extension harness 250-8584 (**Tip:** Align the arrows from both harness ends to ensure correct fitment and proper pin alignment).



Connect the black with white stripe wire from harness 250-8505 to the pink wire of the driver side power distribution block to the left of the brake pedal. Connect the solid black wire to a chassis ground.



Connect male power harness 250-8505 to *S-video to RCA* extension harness 250-8584.

- Complete your installation by connecting the male RCA video connector from harness 250-8584 to your chosen video monitor.

## Testing and Reassembly

### Testing

1. Reconnect the negative battery cable and torque to 3 ft-lbs.
2. Re-enter any theft deterrent information (if applicable).
3. Turn the ignition switch to the ON position.
4. Shift the vehicle into reverse and confirm video feed to your device.

**Note:** If there is no picture present, re-check all harness connections.

### Reassembly

1. Reinstall all trim pieces taking special care to ensure harnesses and wiring connections are properly secured.
2. Make sure no harnesses are bent or pinched by trim pieces.
3. Reconnect all disconnected bulbs and check for function.

## Troubleshooting

Mirror/Monitor Not Working	No Video
Verify 12-volts to black with white stripe wire of 250-8505.	Verify extension harness connection to camera.
Verify ground < 10 Ohms resistance.	Verify harnesses are mated correctly at camera.
Verify secure connection to camera extension harness.	Verify 12-volts and ground connection at camera.

## Installation Notes

---



---