

7 INCHES REVERSING VIDEO SYSTEM



INSTRUCTION MANUAL

Please read this manual thoroughly before operating the device, and keep it for future reference

IMPORTANT NOTICE

- Please read all of the installation instructions carefully before installing the product. Improper installation will void manufacturer's warranty. The installation instructions do not apply to all types of vehicles, and are written as guidelines to assist in installing the system.

SAFETY PRECAUTIONS

- The rear view system is used in reverse.
- Do not install the monitor in viewable area to the driver or obstruct the air bag device.
- Do not attempt to repair this product on your own. If the systems have any problem, please cut off the power and contact local dealer.
- Dropping the unit will cause possible internal mechanical failure.

CAUTION

- The monitor should be situated away from direct sun light, heat ,water or moisture.(This product is made from precise electronic components what should be handled carefully, do not let it fail due to improper use or carelessness)
- Make sure the monitor should be fastened at the safety.
- Please take special care to the wire position while install the rear view system in order to avoid wire damage.

APPLICATIONS AND FEATURES

APPLICATIONS

- For buses ,trailers and trucks back up
- For garbage trucks rearview monitoring
- For engineering truck, forklift truck, lorry, concrete mixer lorry, dust cart, truck, van, crane, bus, and car etc.

MONITOR FEATURES

- 7" digital high light screen
- A variety of installations to meet requirements of different customers
- Automatic back-light for buttons
- Automatic NTSC/PAL

CAMERA FEATURES

- Clear vision at night
- Rain/ sun cover to protect the camera
- High quality CCD with large viewing angle (120 degree)
- Automatic heating when the camera's running temperature is below 10°C(optional)

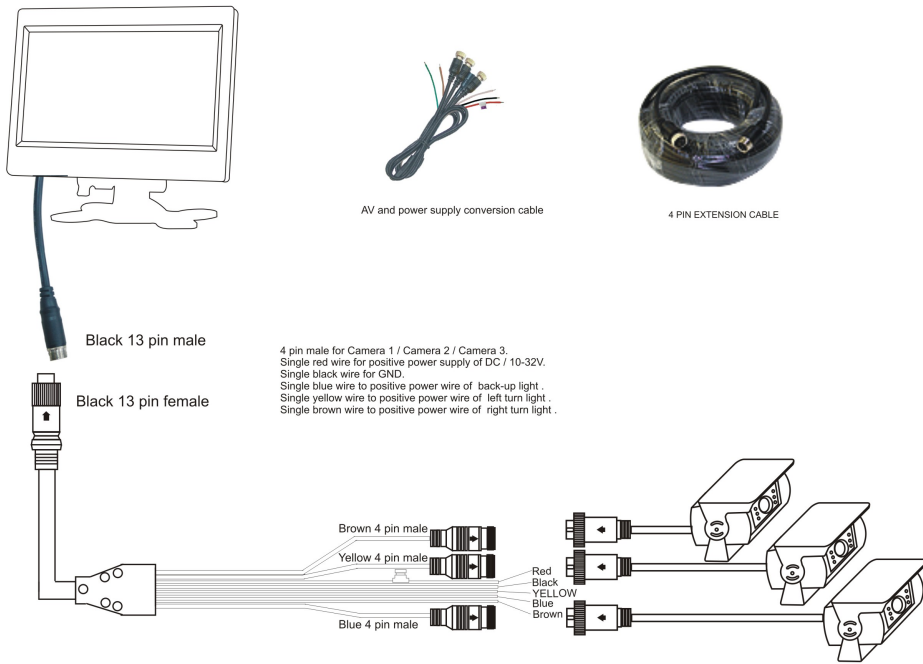
SYSTEM FEATURE

- Automatic backlighting for screen, automatic adjust to the brightness of environment
- System format: NTSC/PAL/AUTO three cameras with trigger lines, when the camera is triggered, the picture switches to the triggered camera automatically Easy installation and convenient use, with innovative functions. Can be used both in vehicle, shipment surveillance and security monitor in the open air

PACKAGE CONTENTS

		
MONITOR	CAMERAS (OPTIONAL)	MONITOR BRACKET(OPTIONAL)
		
U-SUPPORT BRACKET (OPTIONAL)	SUN SHADE(OPTIONAL)	BACK SHADE(OPTIONAL)
		
ANGLE ADJUSTMENT SCREWS(OPTIONAL)	CONNECTOR CABLE	20M EXTENSION CABLE
		
REMOTE CONTROL	MANUAL	

INSTALLATION CHART OF SYSTEM

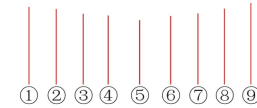


Specified

The supply of parts according to customer's actual needs will be different

SPECIFICATIONS OF MONITOR

DISPLAY KEY FUNCTION



- ① Power indicator
- ② Power
- ③ Menu
- ④ Video switch
- ⑤ Remote control sensor
- ⑥ Page down
- ⑦ Page up
- ⑧ Mirror & normal image switch
- ⑨ Brightness sensor

LCD PARAMETERS

Screen size	7"
Picture display format	16:9/4:3
Resolution	800×3(RGB)×480
Contrast	500: 1
Dot pitch	0.118 (W) X0.362 (H)
Brightness	300cd/m2
Power	≤2W
Current	700mA
Operation temperature	-20~+70℃
Storage temperature	-30~+85℃
Operating Power	12V~24V
System	Automatic PAL/NTSC
Language display	8 languages OSD menu: Chinese, English, German, Spanish, French, Russian, Japan and Portuguese
Size	179.3×134.3×68.8mm (Including sun shield)
Net weight	About 0.54Kg (Including sun shield)

SPECIFICATIONS OF CAMERA

WATERPROOF CAMERA



Light sensor	sharp CCD sensor
Video output	Standard AV output, auto NTSC/PAL system
Effective Pixel	PAL: 628 (H) * 582 (V) NTSC: 510 (H) * 492 (V)
Resolution	420 TV Lines
Minimum illumination	0.5 Lux
View angle	120 degree
S/N ratio	More than 48dB
Electron shutter	1/60~1/5000(s)
Supply voltage	DC9V~15V
Storage temperature	-20°C ~ +60°C, RH95%Max
Waterproof rating	IP68
Night vision distance	10m
Multi-function	Ight vision, waterproof, antifogging , shock resistance, mirror function

INSIDE CAMERA



Light sensor	sharp CCD sensor
Video output	Standard AV output, auto NTSC/PAL system
Effective Pixel	PAL: 628(H) * 582(V) NTSC: 510(H)*492(V)
Resolution	420 TV Lines
Minimum illumination	0 LUX
View angle	120°
S/N ratio	More than 48dB
Lens focal length	2.5mm—25mm
Supply voltage	DC9V~15V
Storage temperature	-20°C ~ +80°C, RH95%Max
Night vision distance	10m
Multi-function:	Night vision, shock resistance

SAFETY AND INSTALLATION INSTRUCTIONS

Secure the monitor in such a way that it can not become loose under any circumstances (sudden braking, accidents) and cause injuries to the occupants of the vehicle.

Do not attach the monitor in the area that may be used by an airbag, as this could cause injury if the airbags are triggered.

Do not open the monitor.

Do not submerge the monitor in water; the monitor is not waterproof.

The monitor may not impair if the housing has been damaged.

Connect it to the correct voltage.

Do not press the LCD display.

Do not drop the monitor.

The picture quality can be impaired in the vicinity of electromagnetic fields.

For this reason do not mount the monitor near loudspeakers.

CAUTION

Before making the connection, disconnect the ground terminal of the car battery for avoiding short circuits.

The plugs should be fully inserted into the connectors or jacks.

A loose connection may cause malfunctioning of the unit.

CLEANING AND GENERAL MAINTENANCE

If your vehicle has been parked in direct sun light resulting in a considerable rise in temperature inside the vehicle, allow the unit to cool off before operating.

Clean the unit with a sklightly damp soft cloth .Use a mild household detergent.

Never use strong solvents such as thinner or benzine as they might damage the finish of the unit.

CLEANING

Unping or power off mode before cleaning. Do not use liquid cleaners or aerosol cleaners .Use a damp cloth for cleaning.

VENTILATION

Holes in the cabinet and of the back or bottom are provided for ventilation, and to ensure reliable operation of the monitor equipment by protecting from overheating . These holes must not be blocked or covered.

OBJECT AND LIQUID ENTRY

Neve push objects of any kind into this monitor equipment through holes as they may touch dagerous voltage points or short-out parts that could result in a fire or electric shock. Never spill liquid of any kind of priduct.

SERVICING

Do not attempt to service this system by yourself as opening of removing covers may expose you to dangerous voltage or other hazards. Refer all servicing to qualified service personnel.

FCC COMPLIANCE & E-MARK STATEMENT

NOTE

This equipment has been tested and found to comply with the limits for a class A digital device, pursuant to part 15 of the FCC rules. These limits are designed to provide reasonable protection against harmful interference when the equipment is operated in a commercial environment. This equipmnet generates, uses, and can radiate radio frequency energy and, if not installed and used in accordance with the instuction manual, may cause harmful interference to radio in which case the user will be required to correct the interference at this own expense.

CAUTION

Any changes or modifications in construction of this device which are not expressly approved by the party responsible for compliance could vold the user's authority to operate the equipment.